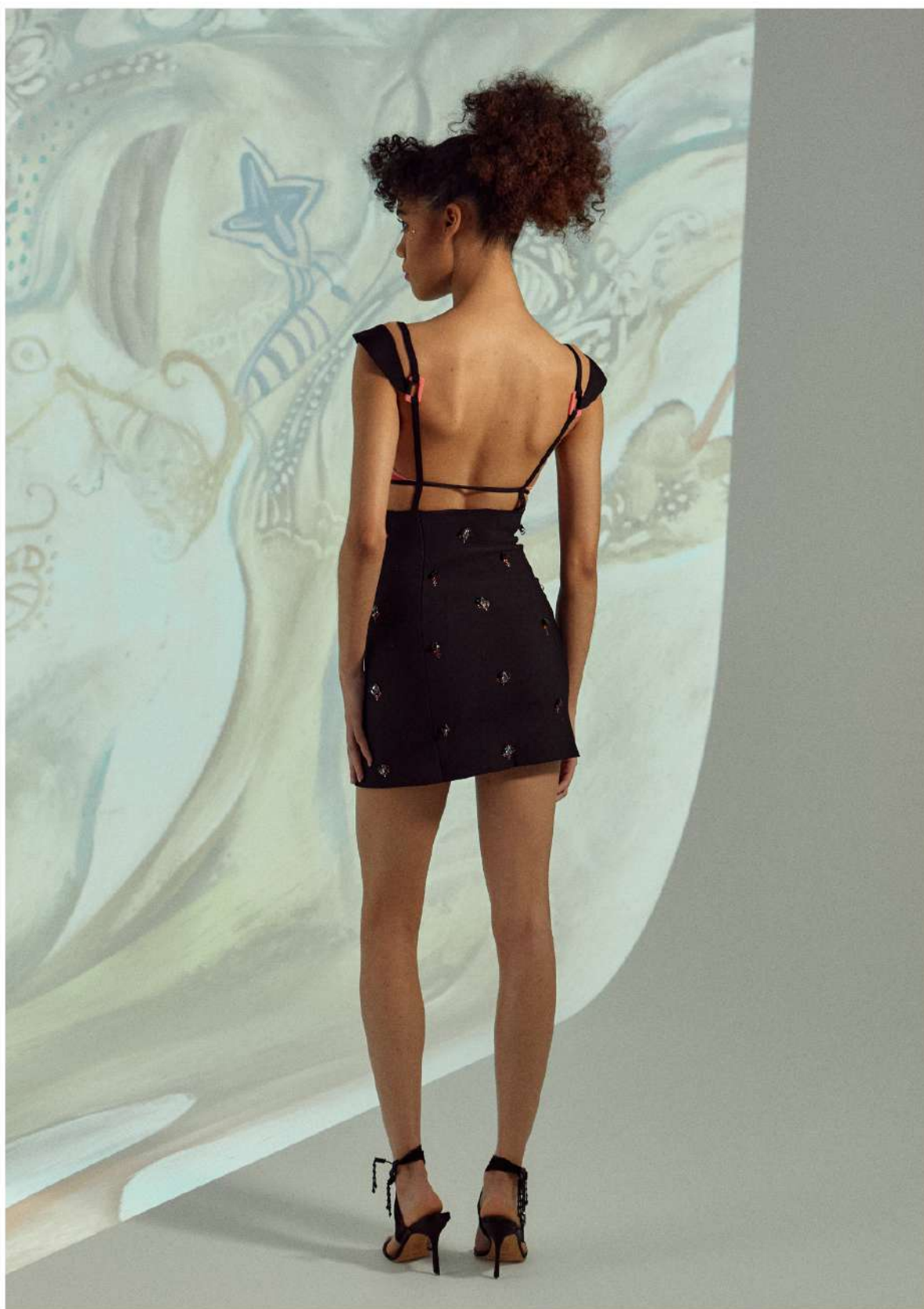
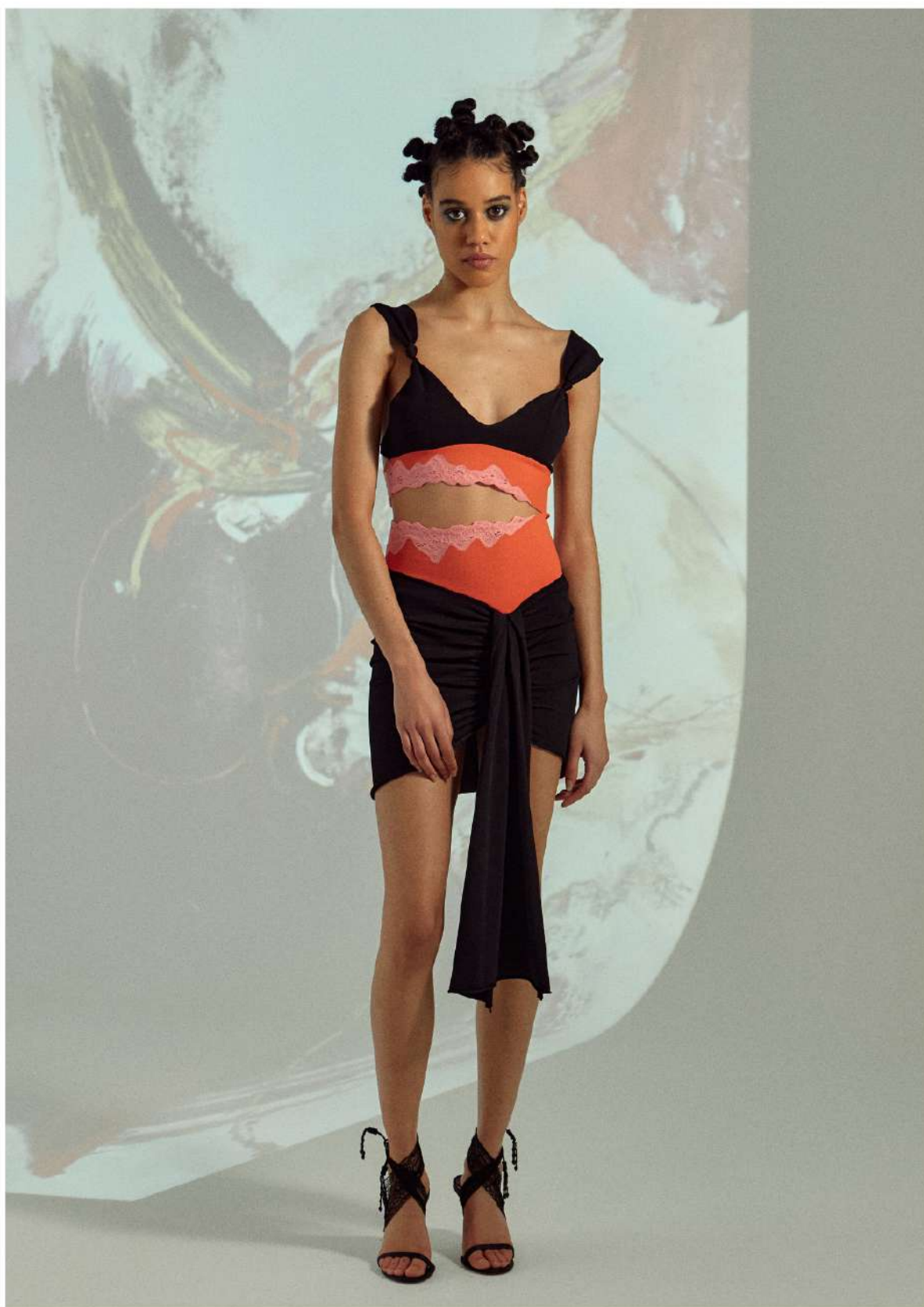


PER ASPERA
AD ASTRA
lookbook





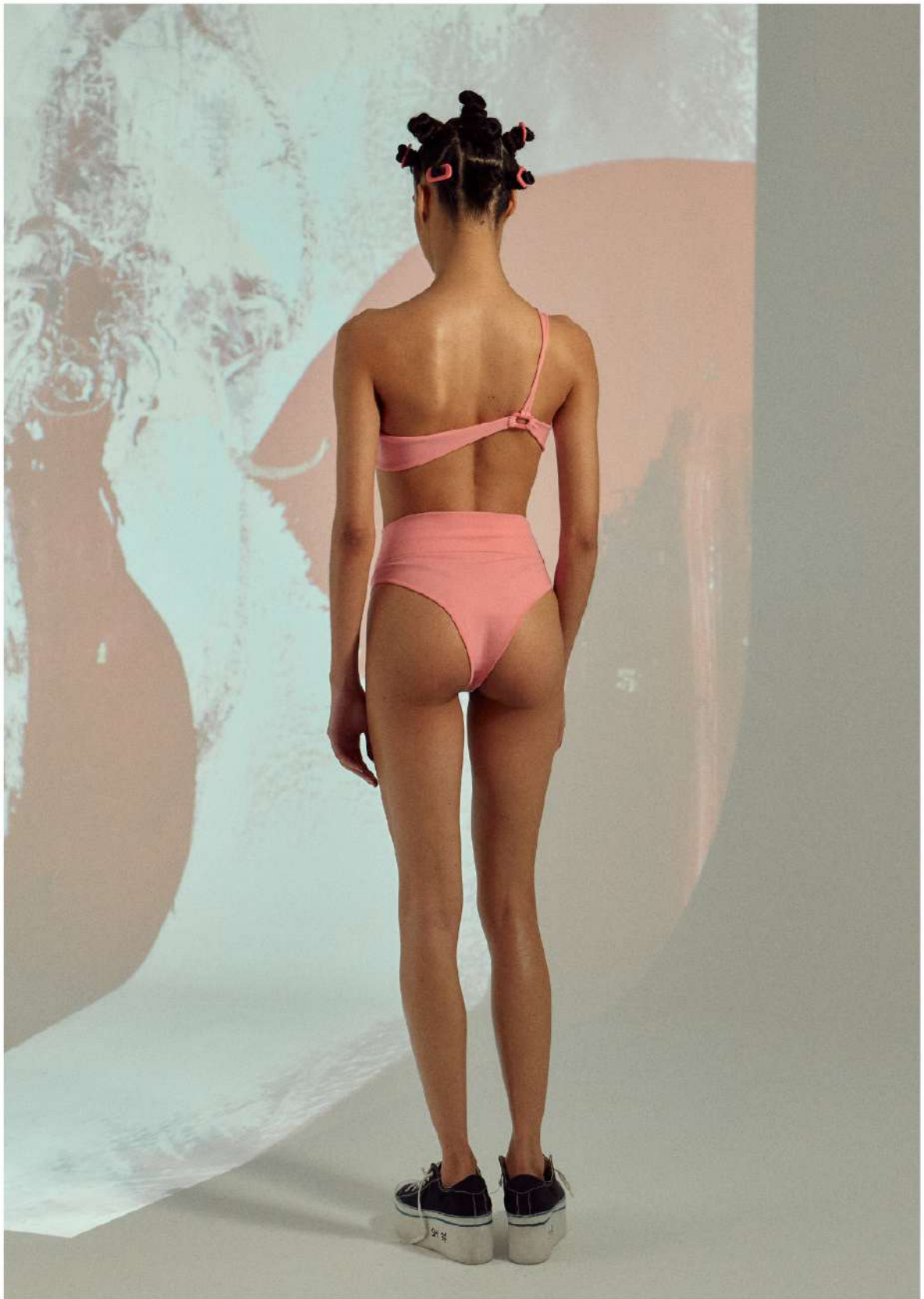


















COD 23: Mini dress in double with lace cups, with rhinestones and Swarovski, in viscose and cotton



COD 24: Sarong skirt in jersey with lace inserts and shirring on the front, in viscose and cotton

COD 25: Top in full needle with lace inserts and cups in double stitch, in viscose and cotton



COD 26: Pants in shirred jersey, in viscose

COD 27: Asymmetric double top with heart shaped neckline, in viscose



COD 28: Bikini bottom in jersey with cut-out on the front, in cotton

COD 29: Bikini top in jersey with twine on the front, in cotton



COD 30: Open work mini dress with polo neck on full Milano base and cut-out sleeves, in cotton